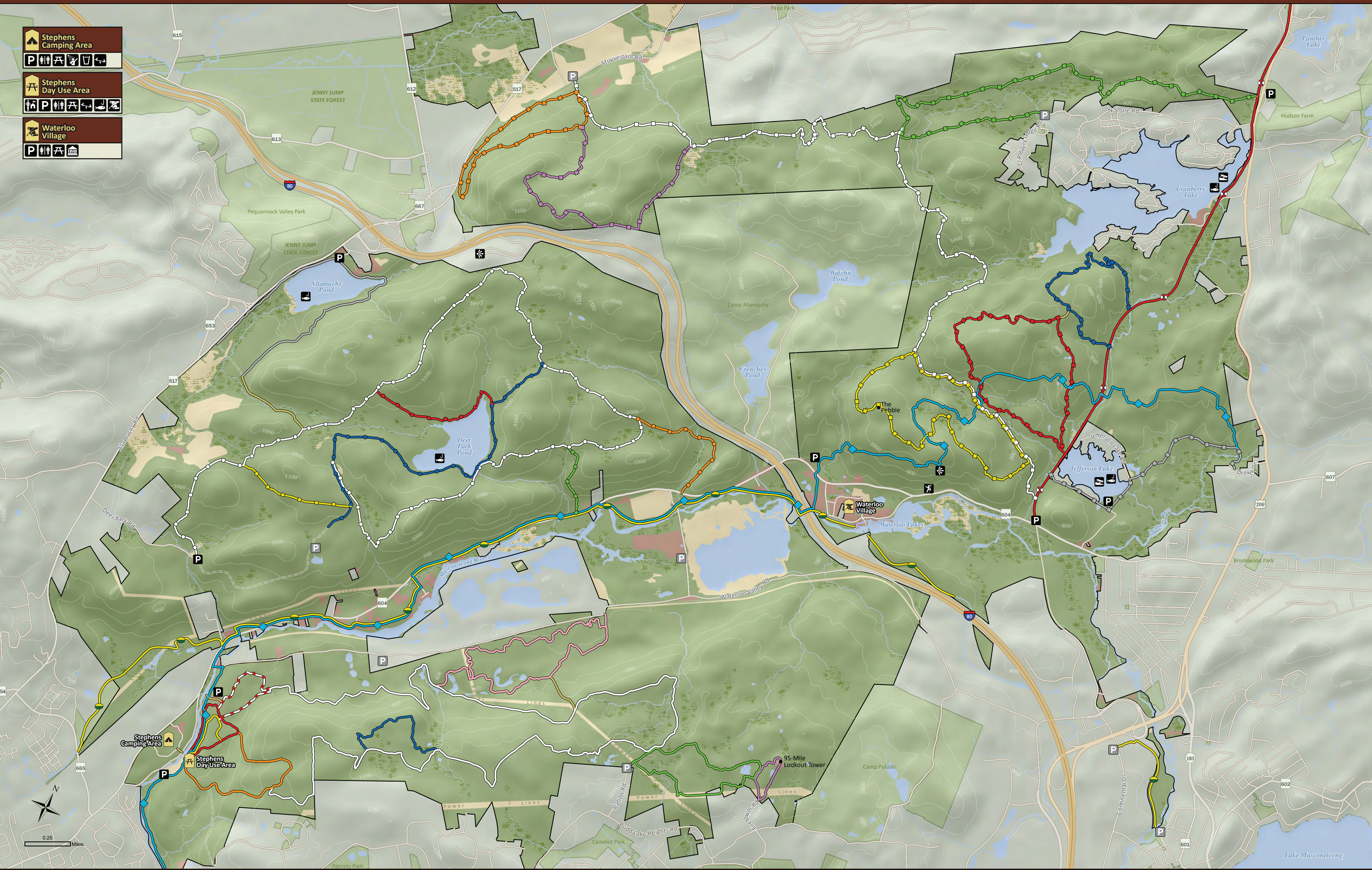


ALLAMUCHY MTN & STEPHENS State Parks

- Stephens Camping Area**
- Stephens Day Use Area**
- Waterloo Village**



Open Field or Grass	Allamuchy Pond Trail (2.2 mi)	Waterloo North Trail (0.8 mi)	Maze Trail (1.9 mi)	Yellow Trail (0.5 mi)	Ranger Trail (2.6 mi)	Sussex Branch Trail (3 mi)	Trail Connector	Museum	Playground
Forest	Barberry Trail (0.8 mi)	Waterloo South Trail (0.5 mi)	Fire Tower Trail (0.6 mi)	Byram Trail (1.5 mi)	Switchback Trail (2 mi)	Towpath Trail/ Morris Canal Greenway (6.6 mi)	Boat Launch	Parking Lot	Restrooms
Developed Area	Birch Trail (0.7 mi)	Blue Trail (0.8 mi)	Red Trail (0.9 mi)	Ditch/Cardiac Trail (2 mi)	Waterloo/517 Trail (5.6 mi)		Drinking Water	Parking (Pull Off)	Rock Climbing
Water	Deer Path Trail (6.5 mi)	Green Trail (2 mi)	Red/White Trail (0.9 mi)	Iron Mine Trail (1.6 mi)	Waving Willie Trail (3.4 mi)		Fishing	Park Office	Scenic View
Wetland	Lake View Trail (2.3 mi)	Orange Trail (1.3 mi)	White Trail (6.8 mi)	Pebble Trail (3 mi)	Highlands Trail (10 mi)		Historic Site	Picnic Area	Shower